

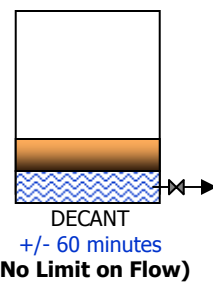
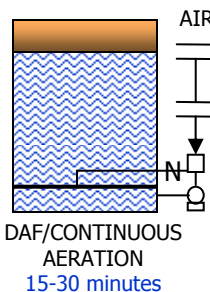
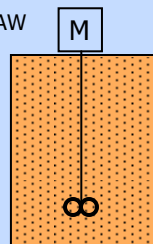
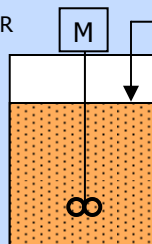
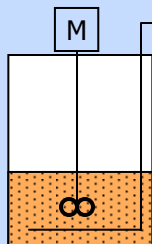
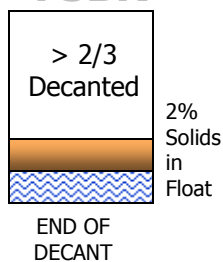
# FLOATING SEQUENCE BATCH REACTOR (FSBR) PATENT PENDING

**Double the Capacity in the Same Footprint  
Utilize or Retrofit Existing Equipment  
Increased Through-Put in Less Time**

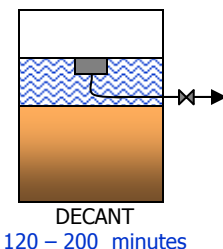
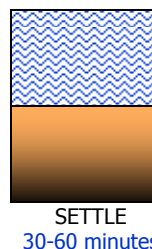
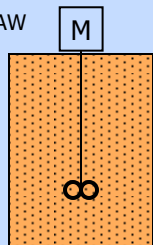
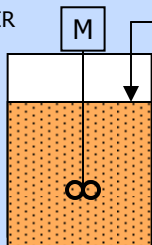
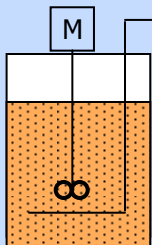
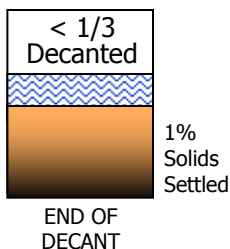
## PROCESS COMPARISON

Process for FSBR and Typical SBR is same at this point

### FSBR



### Typical SBR



## FSBR ADVANTAGES OVER TYPICAL SBR:

- Double the Capacity in the Same Size Tanks
- Eliminate Complex Decanter Assembly
- Stable Solids / Liquid Interface Allows Higher Decant Rate
- Decrease Process Time by Up to 2.5 Hours/Day
- Less Sludge Bulking and No Denitrification Concern
- Effluent Saturated with Oxygen – No Post Aeration Required
- Higher MLSS Concentration >1% TSS vs. 5000 mg/L Increases Load Capacity
- 3 – 6 Hours More Oxygen Contact Time/Day (Less Odor Concerns)
- Pre-Thickened WAS >2% vs. 1%